



NEWSLETTER

May 2024



SANRAKSHAN RAINBOW HOME

Higher Primary & High School Jooganahalli 34th Cross 2nd Block
2nd A Main Road Rajajinagar Bangalore North 560010



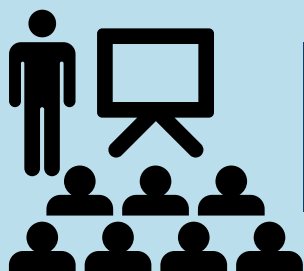
SSLC Results 2024: A Milestone of Excellence



Congratulations to our remarkable young achievers on passing their SSLC exams with outstanding results! This milestone marks the culmination of their hard work, dedication, and perseverance. As they step into a new chapter of higher education and career opportunities, we celebrate their success and the bright futures that lie ahead.

| | | | |
|---|--|--|---|
|  Rajeshwari 77.60% |  Eshwari 69.12% |  Lakshmi.G 66.24% |  Pavithra 54.08% |
|  Vaishnavi 55.2% |  Mamita 52.32% |  Anusha.V 44.16% | |

Sanrakshan Rainbow Home



Training on Register Maintenance and ROR Update



Our dedicated team underwent comprehensive training on maintaining the essential registers in the Child Care Institution (CCI). This training is crucial for ensuring accurate and thorough documentation, which plays a vital role in safeguarding the well-being and rights of every child in our care. The session covered best practices for record-keeping, the importance of confidentiality, and adherence to legal requirements. By equipping our team with the knowledge and skills needed to maintain these registers diligently, we are committed to upholding the highest standards of care and transparency.

Children's Outing: Movie, Bull Temple, and Park Adventure

An unforgettable day for our children as they enjoyed an exciting outing to a movie, the Bull Temple, and a beautiful park! The adventure began with a fun-filled movie, sparking laughter and joy. Next, the children explored the historic Bull Temple, marveling at its architectural grandeur and cultural significance. The day concluded with playtime at the park, where they relished the open spaces, played games, and bonded with friends. This outing was not only a delightful break from their routine but also an enriching experience, fostering curiosity and camaraderie.



Restorative Activity

Restorative Circles are revolutionary as they prioritize inclusivity and emphasize that every voice matters, including those deemed different or deviant. This practice values relationships over profits and productivity. At Sanrakshan Rainbow Home, a three-day Restorative Circle event focused on the theme of belonging involved eight girls. On the first day, the girls discussed their personal understanding of belonging. The second day was dedicated to exploring themes of belonging and rejection, while the third day involved creating artwork to represent their sense of belonging. The objective was to foster a sense of belonging among the girls to their home and each other.



Shoe Sponsorship from Smile Foundation



Smile Foundation sponsorship provided new shoes for the children, significantly improving their comfort and well-being. This generous contribution not only meets a basic need but also boosts the children's confidence and school attendance, fostering a positive impact on their daily lives and education.



Dance Clases for Rainbow Home and Learning Centre Children

Thrilled to announce the commencement of dance classes during the summer holidays for the children in our Child Care Institution (CCI) and Learning Centre! This exciting program offers a fantastic opportunity for our children to explore their creativity, express themselves, and develop new skills in a fun and supportive environment. With a variety of dance styles to choose from, each session is designed to boost confidence, improve physical fitness, and foster teamwork. A huge thank you to our talented instructors and volunteers who are dedicated to making this summer a memorable and enriching experience for our children.



Aadhaar Camp at Rayasandra

With the support of Gubbachi NGO, we organized an Aadhar Card Camp at our Learning Centre! This initiative aims to ensure that every child and community member has access to their unique identification, which is essential for availing various government services and benefits. The camp will provide on-site assistance for new enrollments and updates to existing Aadhar information



Formation of CCPC in Rayasandra



We are proud to announce the formation of the Community Child Protection Committee (CCPC) in Rayasandra, a significant step towards ensuring the safety and well-being of our children. This committee, comprising dedicated community members, local leaders, educators, and child protection advocates, is committed to creating a safer environment for every child in our community.



The CCPC will focus on raising awareness about child rights, identifying and addressing child protection issues, and promoting preventive measures to safeguard our children from harm. By fostering collaboration and active participation among all stakeholders, we aim to build a resilient and supportive network that prioritizes the needs and rights of our children.

Renovation of Community Care Learning Centre

Alpha Elsec Aerospace & Defense Pvt. Ltd's Corporate Social Responsibility (CSR) funding has significantly contributed to the upgrading of infrastructure at our educational institution. This generous funding has enabled the development of modern classrooms equipped with state-of-the-art facilities and advanced learning tools. These comprehensive improvements are designed to create a more engaging and effective learning environment. The enhanced infrastructure not only aims to foster better educational outcomes for our students but also contributes to the overall development and upliftment of the community.



Supplementary Nutritional Support



As part of the Community Based Care Programme, dry ration kits were distributed to families in need, addressing one of the most critical issues faced by vulnerable households—food insecurity. This thoughtful initiative is designed to ensure that these families have consistent access to essential nutrition, thereby alleviating the stress and uncertainty associated with lack of food. By providing these kits, the programme not only supports the immediate well-being of the community but also contributes to long-term stability and health. This effort plays a crucial role in improving the overall quality of life for the recipients, demonstrating a commitment to fostering a more resilient and self-sufficient community.

New Admission for the Academic Year 2024-25

As the year progresses, several children transition out of the institution to pursue their higher studies. In response, we have identified and enrolled 13 new vulnerable girls from diverse communities into our Sanrakshan Rainbow Home for the academic year 2024-25. This initiative aims to provide these young girls with a safe and supportive environment, ensuring they have access to education and the necessary resources for their development and well-being.

Additionally we also enrolled Kolebasava Community Children to high school admission .



Our Partners



PLANSOURCE

Accel

BORGWARNER

Telos



Supporting Organizations/ Govt. Departments



Dept. of School
Education



Directorate of
Child Protection



Open Door
Foundation



Raise Against
Hunger India



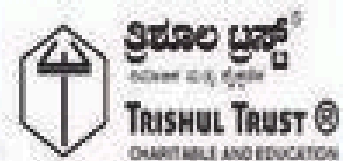
Goonj



Bhoomi Organization



Doctor's For Seva



Trishula Trust



Prakruthi Foundation



Charitable Support
Bangalore



Astitva Legal Trust



Child Rights Trust



Big Basket



Fair Iskac India
Private limited



Christ University



IIFL Samsta



RV University



St. Clare College

Green Recyloplast Solutions

Inner Wheel Charitable Trust

Grindwell Norton